



**Chicago
Pneumatic**

CPG Series



**Rotary Screw Compressors
375 to 475 HP**

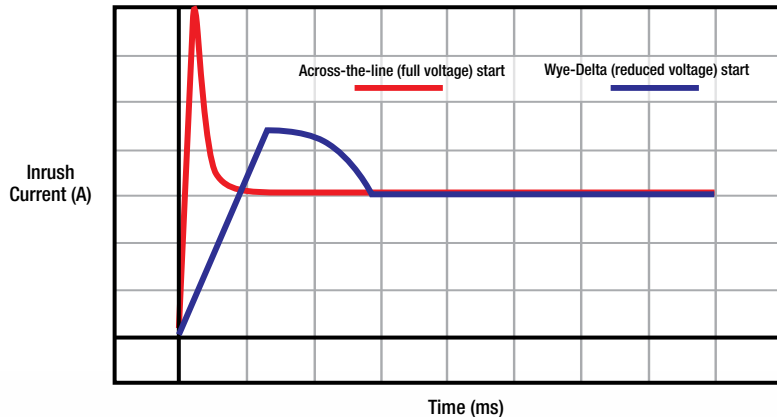
**High-performance products.
Designed for you !**

A Compressor is Only as Good as the Sum of Its Parts!

Superior motor design

Wye-Delta operation allows the motor to start on the wye connection and then operate on the delta connection. This minimizes starting current demand, reduces the chance of the motor tripping the circuit and lowers the energy bill by reducing the inrush current up to 10 times compared to full voltage starting.

The TEFC (IP55) feature protects the motor with a water tight and dust tight enclosure while independently cooling the motor. It is built to NEMA specifications and designed for operation in 100% humidity and corrosive environments. It is built to NEMA specifications, certified by UL, and designed for operation in saturated and corrosive environments.



The CP compressor guarantee

CP Compressors is dedicated to providing the highest quality, most reliable equipment for your compressed air application and we stand behind our promise with one of the most competitive STANDARD warranties in the industry!

- All Rotary Screw **5 YEARS**
- Two-Stage Reciprocating **2 Years**
- Single-Stage Reciprocating **1 Year**

No contracts or service agreements. Authorized start-up required.

Gear Drive Rotary Screw Air Compressors 375 to 475 HP

Superior compressed air solution for demanding industries

Maximize your productivity with an optimum compressed air solution provided by the CPG series of compressors. Built-in cooling provides improved performance, reliable transmission for energy savings and an advanced monitoring system ensure you get the most from your compressed air system! The CPG provides minimum operating cost, easy installation and simplified maintenance.

Model	CPG-380	CPG-450	CPG-480
HP	375	422	475
acfm @125 psig	1750	1954	N/A
acfm @150 psig	1528	1747	1947
acfm @175 psig	N/A	1520	1739
Sound level (dBA)	77	78	80
Length (in.)	175	175	175
Width (in.)	84	84	84
Height (in.)	91	91	91
Approx. Weight (lbs.)	14471	14671	14871

Standard features

- Fully enclosed compressor package
- Microprocessor control with timed shutdown
- Low sound levels
- Wye-Delta, TEFC motor
- Available in 460V and 4160V
- Water-cooled operation
- Rapid maintenance from hinged access panels
- Small footprint saves vital production space

Proven reliability

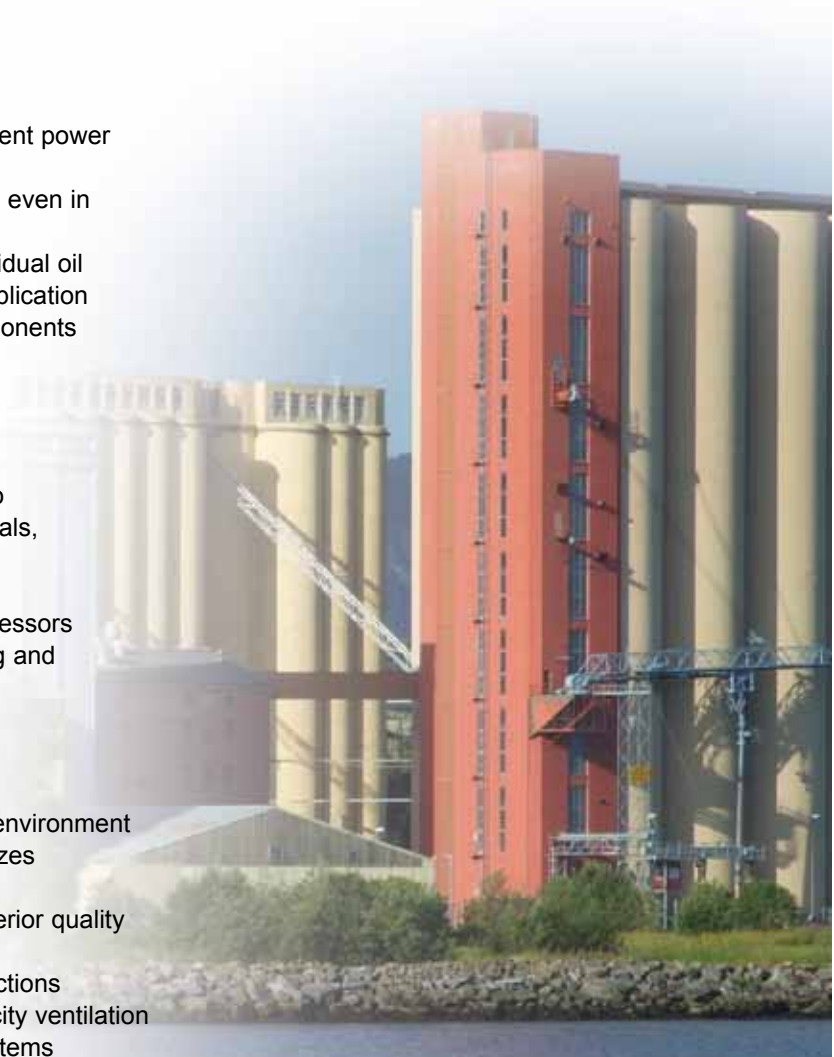
- Gear drive transmission ensures perfect alignment and efficient power transmission for minimum energy losses
- Rugged components tested and proven provide long lifetime even in harsh conditions (46°C ambient temp)
- Two-stage separation system for superior air quality and residual oil content less than 3ppm prevents contamination into your application
- Industrial-grade, 2 micron air filters protect the internal components of the compressor, thus increasing their lifetime

Intelligent design

- Microprocessor controller uses latest computer technology to give a user-friendly display that monitors maintenance intervals, compressor performance and potential operating dangers
- Remote monitoring capability and multiple safety protections
- Ability to control up to 4 other electronically controlled compressors
- The electronic microprocessor provides weekly programming and pressure band selection for energy savings

Silent, low cost operation

- High quality sound-attenuating insulation protects the work environment
- Fan with low rotation speed reduces sound level and minimizes operating costs
- State-of-the-art screw element: time proven design with superior quality material for highest machine output
- Easy panel access to all service points, air and water connections
- Latest heat exchanger technology combined with high capacity ventilation fan for efficient cooling and energy-saving heat recovery systems



Superior design

Precision-made cooling fan, aftercoolers and water-cooling technology increase compressor life and reduce downstream condensate

Industrial-grade filtration protects your equipment from dust and harmful contaminants

Advanced monitoring controller for accurate control of your compressed air system

Two-stage separation system ensures optimum air quality and maintains the integrity of the lubricant

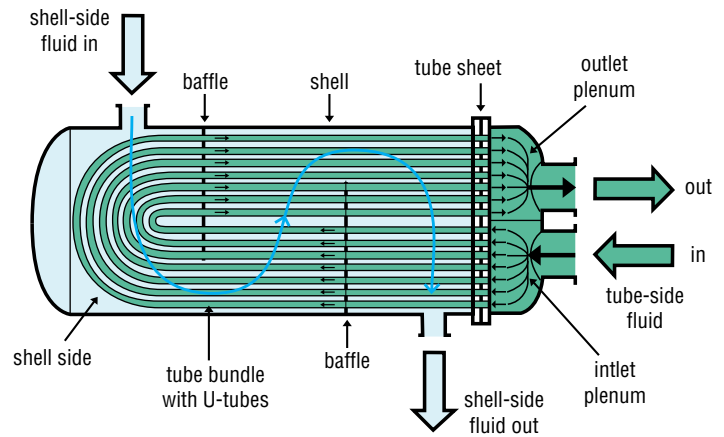
High efficiency, wye-delta, TEFC continuous-duty motor capable of operating in high ambient temperatures

Easy to remove panels give quick access to all service points, reducing downtime for maintenance intervals

Gear-drive transmission for perfect alignment, reduced vibration and more efficient performance

Superior cooling

- Tube in shell heat exchanger
- Simple, easy to maintain and repair
- Large exchange surface
- High thermal efficiency rate



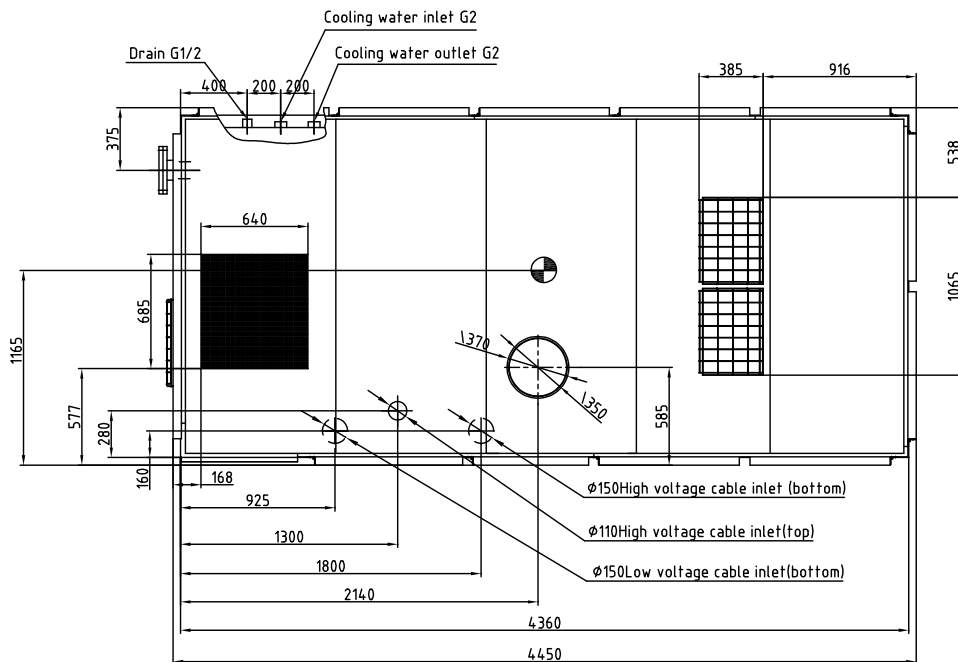
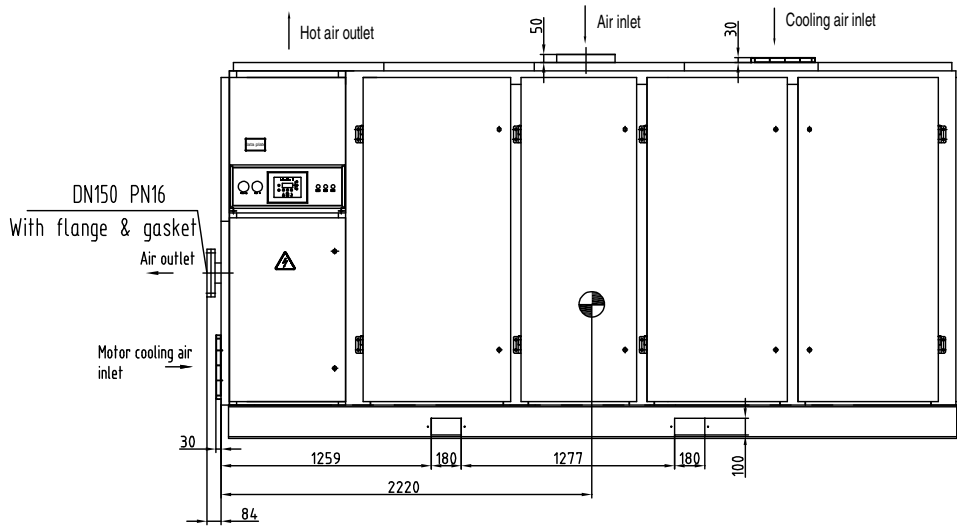
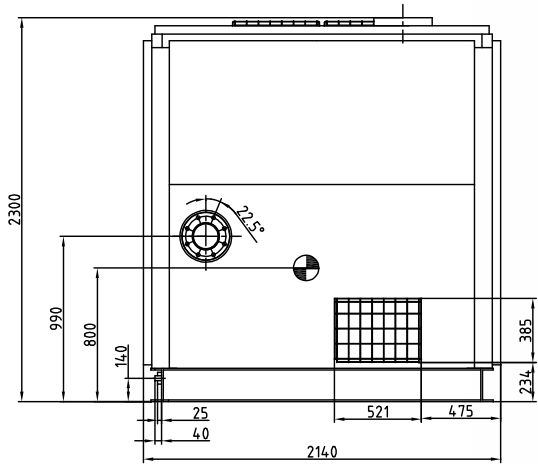
Superior intelligence

- Four Line LCD Display
- Operating pressure and temperature
- Adjustable set points
- Service 7 shutdown messages
- Alarm messages
- Shutdown messages
- LCD readouts available in several languages

- Control and Regulation
- Programmable start/stop
- Automatic and manual load/unload
- Controlled stop
- Emergency stop



Dimensional drawings (mm)





Over 100 years of experience

Since 1901 the Chicago Pneumatic name has represented high-performance tools and equipment designed for an extensive range of applications. Today, Chicago Pneumatic has a global reach, with local customer centers around the world. Chicago Pneumatic tools and air compressors are tailored to the needs of the industrial, vehicle service, and construction markets. Every day we develop and manufacture new products that are meant to meet your demands not only today, but tomorrow as well.

To learn more about our extensive range of tools, hydraulic attachments, industrial and portable compressors, accessories and workshop equipment, please visit www.cp.com.

CP Compressors is supported by a network of trained service centers who can provide complete warranty support, spare parts and technical consultation. For more information on our compressed air products, please contact your local authorized CP Compressor distributor or representative.



Original parts. Your quality assurance.

The "original part" identification confirms that these components passed our strict test criteria. All parts are designed to match the compressor and are approved for use on the specified compressor. They have been thoroughly tested to obtain the highest level of protection, extending the compressors' lifetime and keeping the cost of ownership to an absolute minimum. No compromises are made on reliability. The use of "original part" certified quality components helps ensure reliable operation and will not impact the validity of your warranty, unlike other parts. Look for your quality assurance.

DISTRIBUTED BY



Servivane

Av. Las Trojes #109 Col. Centro Bodegero Las Trojes
C.P. 37227
León Guanajuato.
Tel y Fax: +52 (477) 764 017 4 / (477) 764 017 3 / (477) 763 046 0



The Compressed Air and Gas Institute, CAGI, is an organization dedicated to improving the compressed air industry through established standards. As a proud member of CAGI, CP Compressors publishes all technical data in accordance with CAGI/PNEUROP PN2CPTC2 guidelines and voluntarily allows products to be selected for participation in CAGI's Performance Verification Program. With CP Compressors, our customers know they are receiving the excellent performance that we publish.



CP Compressors
1800 Overview Drive
Rock Hill, SC 29730
877-861-CPAC (2722)

CP Compressors Canada
2900 Argentina Rd. Unit 13
Mississauga, Ontario L5N 7X9

Date: February 2011